

Review Sheet

(authored by Al Grasso)

Nib Name Leonardt Ball Pointed No. 526 EF
Manufacturer Leonardt
Nib Size 43mm long by 7.7mm wide at its widest point
Material Spectrometric analysis shows that the nib is made up of:

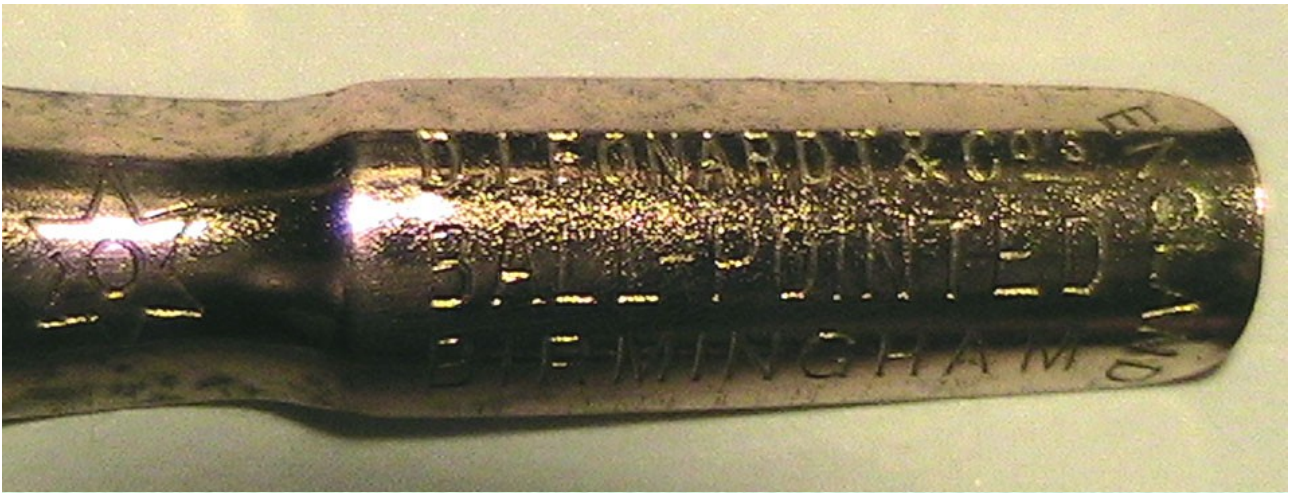
Top View



Comment This is quite a large nib and one may be led to believe that it is quite hard to write with. In fact, it is not at all hard but quite flexible; the reason for its flexibility is due to the material and two lateral slits on the edges of the curved part towards the front of the nib. Each cut starts just in front of the pierced eyelet and continues almost to the end of the eyelet.

Hardness F (SCALE: 2H – H – HF – F – 2F)

Marking The mark 526EF is punched crossway on the nib front.
On the nib shoulder: D. LEONARDT & C. o's
BALL POINTED
BIRMINGHAM
ENGLAND



Key Features The key feature of this nib is the ball created on the tip of the nib tines simply by punching the nib from the top in order to create a curved ball on the underside of each tine. This is clearly shown in the two photos below: photo 3 and 4.

Photo 3 Top of nib with concave tines

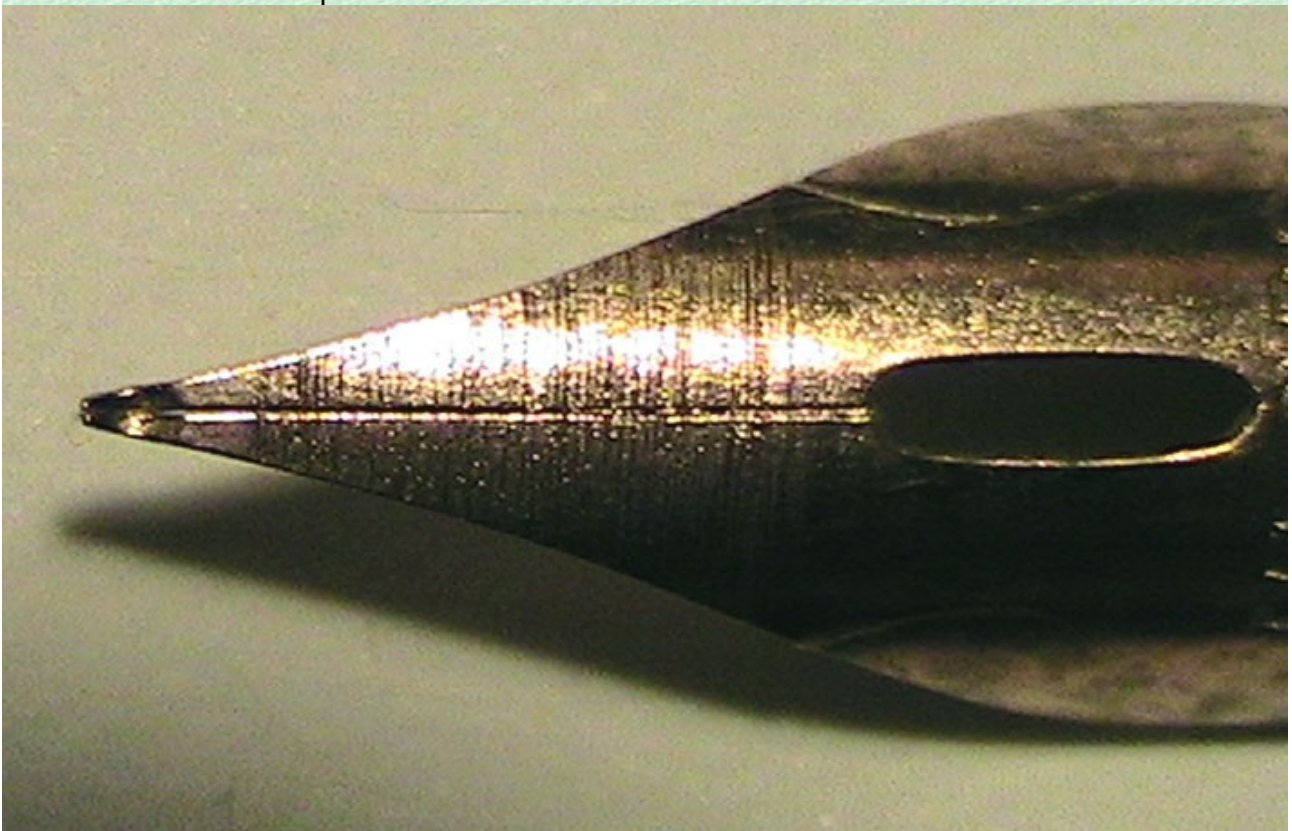
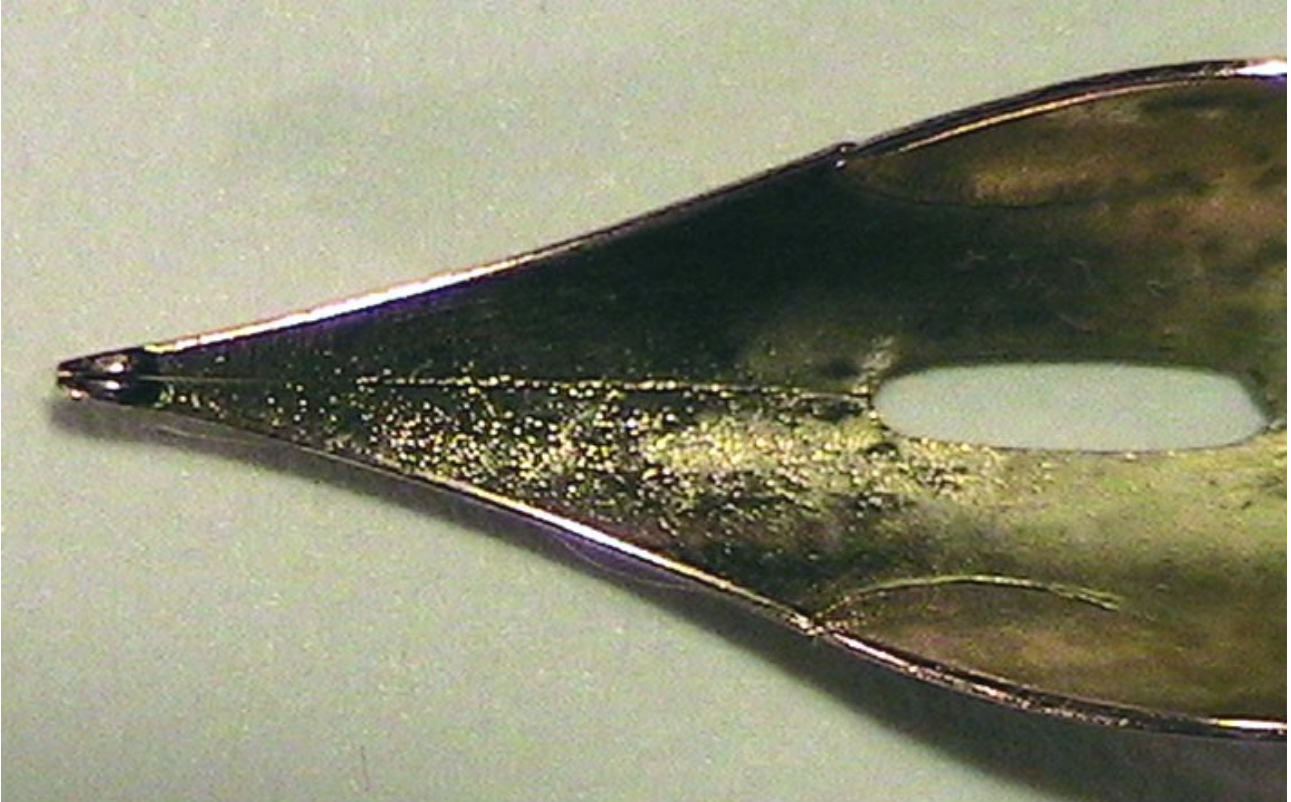


Photo 4

Underside of nib tines with convex balls



The object of the ball is to avoid scratching, or digging into the paper, during the upward stroke.